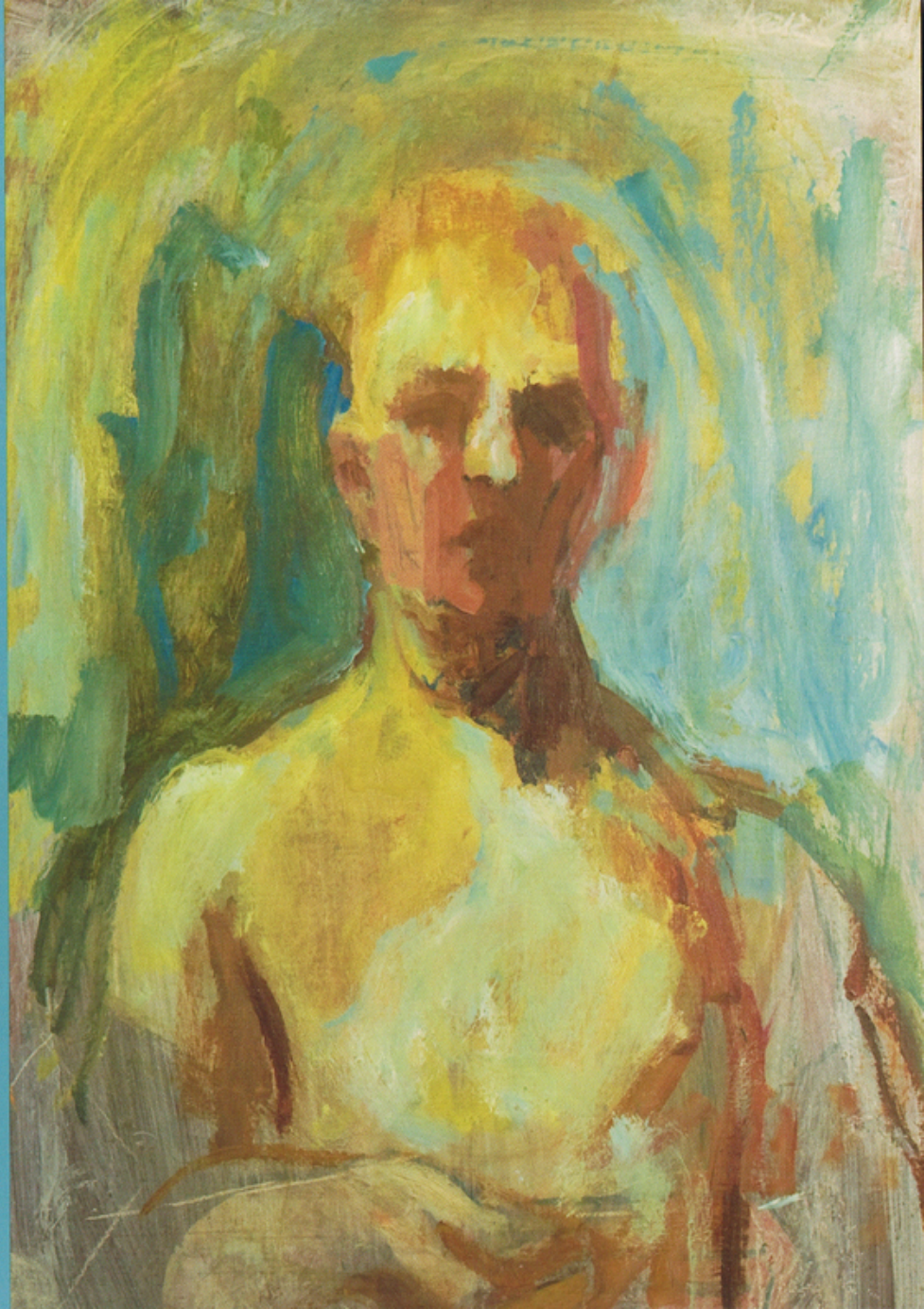


BRICK WALK & HARVEY

catalog of
works for sale

Summer
2009



Peter Joyce b.1964

La Coupelasse 2008
Acrylic and collage on board
36 x 32 inches

Exhibited
Cambridge, England, Lynne Stover Gallery,
Peter Joyce, New Paintings, 2009

Peter Joyce is a British-born painter who is now based in Bouin, France. It is flat there, very flat. A world of salt marshes and muddy creeks, of sea walls marking the deep water of channels that lead to old wooden quays where fishing boats moor, of distant horizons and massive skies. It is this world that Peter Joyce paints with such strength and clarity. He abstracts the landscape as his fellow countrymen Peter Lanyon, Ben Nicholson, and John Piper did, but with his own particular vision and methodology. The observed world is tilted and stacked, turned and flattened, and what were oyster paths or channels or fishing huts become sensuous curves and shapes arranged around a defined horizon line. It is with this distillation and transformation that Peter Joyce finds the essential poetry of place, a poetry honed by lengthy walks and deep observation. Constable famously said, "I should paint my own places best" and much the same could be said of Peter Joyce.

Peter Joyce was born in Dorset, England and he attended The Arts Institute, Bournemouth and studied Fine Art at Stourbridge College of Technology and Art. He has exhibited widely and his work is held internationally in many fine private and public collections.

